



# Cola<sup>®</sup>Teric BBS

## Sultaine Amphoteric from Babassu Oil

**INCI** Babassuamidopropyl Hydroxysultaine

**CAS** 68139-30-0

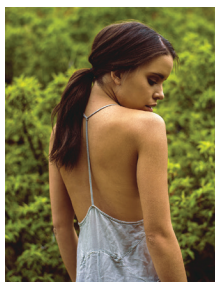
**LISTINGS** USA (TSCA), Canada (DSL), EU (REACH), Australia (AICS), China (IECSC/IECIC), Philippines (PICCS), New Zealand (NZIOC), Taiwan (TCSI)

**Cola<sup>®</sup>Teric BBS** is a mild surfactant from babassu oil, a sustainably grown and harvested oil from Brazil. Cola<sup>®</sup>Teric BBS offers enhanced foaming and viscosity building properties compared to traditional Coconut or palm kernel products. Cola<sup>®</sup>Teric BBS has a high active content and is supplied preservative-free.



### BENEFITS

- Sustainably derived from Brazilian babassu oil
- Better foam, feel, and viscosity building than standard coconut betaine or sultaine
- Globally accepted
- No Prop 65 components
- Preservative-free



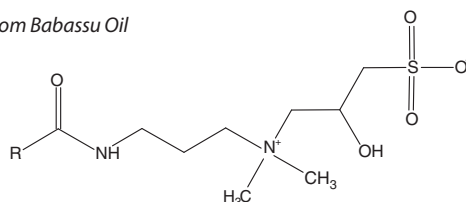
### APPLICATIONS

- Luxury shampoos
- Body washes
- Facial cleansers
- Sustainable products
- Formulations with high bio-based content

### TYPICAL PROPERTIES / STRUCTURE

Appearance	Clear Liquid
Ionic Character	Amphoteric
Solids, %	49.0
NaCl, %	7
pH (10% aqueous)	8.0
Color, Gardner '98	2

R - from Babassu Oil



### FOAM PERFORMANCE

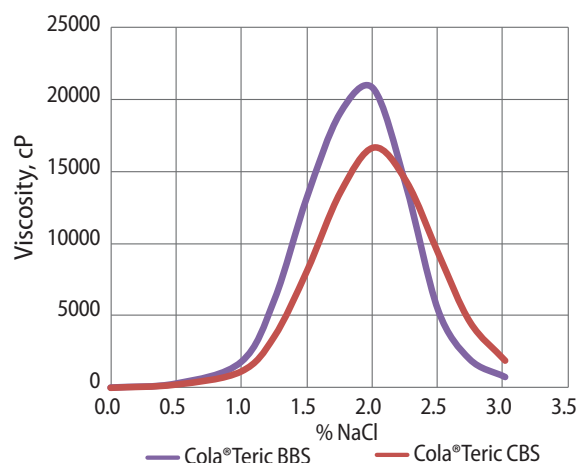
Foam performance of Cola<sup>®</sup>Teric BBS is the same or better than traditional coconut derived sultaines.

Ross-Miles (1% Active) mm	DI Water		Tap Water	
	CBS	BBS	CBS	BBS
Immediate	160	165	170	175
1 min	150	150	155	160
5 min	145	145	150	155

### VISCOSITY PERFORMANCE

Using Cola<sup>®</sup>Teric BBS in place of standard sultaine (Cola<sup>®</sup>Teric CBS) in the following traditional system allowed for reduced salt usage and enhanced viscosity response.

INGREDIENT	COLA <sup>®</sup> TERIC CBS	COLA <sup>®</sup> TERIC BBS
Water	qs to 100.00	qs to 100.00
<b>Colonial SLS</b>	10.00	10.00
<b>Colonial SLES-2</b>	10.00	10.00
<b>Cola<sup>®</sup>Teric CBS</b>	3.70	-
<b>Cola<sup>®</sup>Teric BBS</b>	-	3.70
<b>Cola<sup>®</sup>Liquid DC</b>	1.50	1.50
Citric Acid, 50%	qs to pH 6	qs to pH 6



## Body Wash

No. 2060

Formulated with naturally-derived ingredients to gently cleanse without sulfates or betaines. Builds a thick, lush lather for an everyday gentle clean that keeps you feeling fresh.

	TRADE NAME / INCI NAME	%
1	Water	qs to 100.00
2	<b>Suga®Nate 160NC</b> / Sodium Laurylglucosides Hydroxypropylsulfonate	19.50
3	<b>Cola®Mate LA-40</b> / Disodium Lauryl Sulfosuccinate	4.00
4	<b>Cola®Teric BBS</b> / Babassuamidopropyl Hydroxysultaine	9.50
5	<b>Euxyl® K712</b> / Sodium Benzoate and Potassium Sorbate	1.00
6	Fragrance	0.20
7	Citric Acid, 50%	qs to pH

### PROCEDURE:

Combine ingredients 1 – 2 and heat to 40 – 45°C. Add ingredient 3 and mix until clear and uniform. Add ingredient 4 and begin cooling below 40°C. Once below 40°C, add remaining ingredients. Adjust pH to 5.0 – 5.5 with citric acid (viscosity is pH dependent).

### TYPICAL PROPERTIES:

Appearance: Clear Liquid  
pH: 5.0 – 5.5  
Viscosity: 5,000 – 10,000 cP

## MatTek® Epi-Ocular Test

*In vitro* epidermal keratinocytes (4% solids)

ET-50 test is **46.2** minutes

Results indicate '**minimally irritating**' classification.

Readily biodegradable per OECD 301 methods. This product meets the criteria for a surfactant under the EU Detergents Regulation (EC) 648/2004.

## Foaming Face Wash (Palm-Free, Coconut-Free) No. 2061

Formulated with naturally-derived ingredients to help cleanse, refresh, and address the needs of normal skin. For an everyday gentle clean that keeps you feeling fresh. Provides moisturizing, softening, and antioxidants from grapeseed oil-based Cola®Lipid GS. Specially designed to be free of palm oil, coconut oil, sulfates, and betaines.

	TRADE NAME / INCI NAME	%
1	Water	qs to 100.00
2	Vegetable Glycerin	2.00
3	<b>Cola®Teric BBS</b> / Babassuamidopropyl Hydroxysultaine	10.00
4	<b>Cola®Teric HBS</b> / Cannabisamidopropyl Hydroxysultaine	5.00
5	<b>Cola®Lipid GS</b> / Sodium Grapeseedamidopropyl PG-Dimonium Chloride Phosphate	3.00
6	<b>Euxyl® K712</b> / Sodium Benzoate and Potassium Sorbate	1.00
7	Fragrance	0.20
8	Citric Acid, 50%	qs to pH

### PROCEDURE:

Combine ingredients 1 – 7 in order, mixing until clear and uniform. Adjust pH to 5.0 – 5.5 with citric acid.

### TYPICAL PROPERTIES:

Appearance: Clear Liquid  
pH: 5.0 – 5.5  
Viscosity: < 50 cP

Cola®Teric BBS is "Derived Natural" with a Natural Origin Index of 0.76 in accordance with ISO 16128 guideline.

## STORAGE / HANDLING

Cola®Teric BBS should be stored in closed containers. Frozen material may be thawed in a warm room, venting drums while warming. Shipped in 55 gallon poly drums (net weight 450 lb/204.1 kg). Typical shelf life is 12 months from date of manufacture. Safety Data Sheets may be found at [www.colonialchem.com](http://www.colonialchem.com).



## Colonial Chemical

225 Colonial Drive • South Pittsburg, TN 37380  
Phone: 423-837-8800 • Fax: 423-837-3888  
[www.colonialchem.com](http://www.colonialchem.com)

*Innovative Specialty Surfactants*