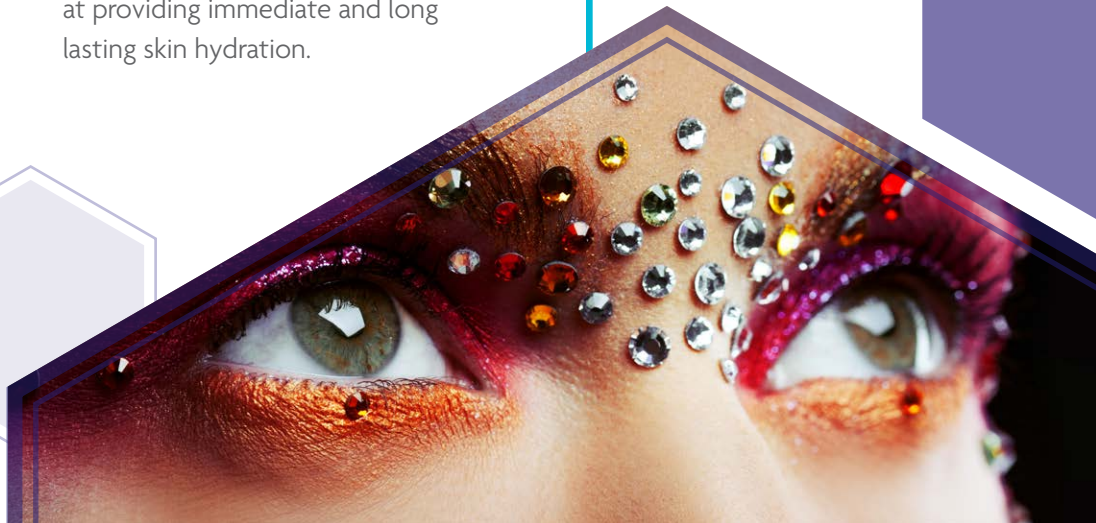




Laser Focus Eye Cream

A breakthrough under-eye solution that dramatically reduces the appearance of fine lines and wrinkles, provides a youthful and rested look. This advanced eye cream is a quick, innovative solution for aging, tired-looking eyes. It works over time to help restore a youthful eye contour for a consistently smooth and improved appearance.

This groundbreaking formulation delivers an even longer-lasting glow and continuous hydration as it contains Hydrasynol™ DOI, a smart skin hydrator and skin barrier builder. It is effective at providing immediate and long lasting skin hydration.



FEATURE INGREDIENTS

DOWSIL™ ES 5300 Formulation Aid is a robust W/Si or W/O emulsifier. It requires minimal volumes with cost saving benefits. It offers the following features: wide compatibility with formulation flexibility, pigments, UV filter and fine particle dispersant. Ease of use, hot or cold process. Wide viscosity profile options including sprays, creams, lotions and clear gels. It also provides an incredible sensory experience.

DOWSIL™ HMW 2220 Non-Ionic Emulsion is a small particle size emulsion of an extremely high viscosity polymer. It is easy to formulate with both cold and hot processing. In skin care, it imparts a rich feel to skin care formulations. It provides wash-off resistance, film barrier properties, and acts as a viscosity builder for water-in-silicone systems.

Dermapep™ Wrincare is a powerful anti-aging and anti-wrinkle product. It increases ECM (Extracellular matrix like collagen, fibronectin) in skin and powerfully protects collagen breakdown against UV irradiation. It is protective effect against pollution like radicals and inflammatory cytokines.



PROCEDURE

Phase A

Premix phase A until homogeneous.

Phase B

Premix phase B until homogeneous. Add phase A to B slowly into vortex with high speed mixing. Continue to mix until homogeneous. Homogenize until the body of the emulsion forms into a thick cream.

Phase C

Add in phase C and mix until homogeneous.

Laser Focus Eye Cream

#	INCI Name	Trade Name	Supplier	Function	Wt.%
Phase A					
1	Aqua	Water	Univar	-	Q.S.
2	Sodium Chloride	Sodium Chloride	Univar	Electrolyte	71.5
3	Phenoxyethanol (and) Ethylhexylglycerin	Lincoserve™ HpH-4	Lincoln Fine Chemicals/ Univar	Preservative	1.00
4	Glycerin	Glycerin USP	P&G/Univar	Humectant	2.00
5	Myristoyl Tetrapeptide-34 (and) Myristoyl Tetrapeptide-6 (and) Butylene Glycol	Dermapep™ Wrincare™	Beadtech/Univar	Anti Aging, Collagen Boosting	3.00
Phase B					
6	Isolsorbide Dicaprylate	Hydrasynol™ DOI	Sytheon/Univar	Active, Long Term Hydration, Skin Barrier Builder	2.00
7	Caprylyl Methicone	DOWSIL™ FZ-3196 Cosmetic Fluid	DOW®/Univar	Skin Feel Enhancer	13.00
8	Lauryl PEG-10 Tris (Trimethylsiloxy) silylethyl Dimethicone	DOWSIL™ ES-5300 Formulation Aid	DOW®/Univar	Silicone Emulsifier	3.00
9	Perfume/Fragrance	Apple, Vanilla Coconut	Alpha Aromatics/Univar	Fragrance	0.50
Phase C					
10	Divinyldimethicone/Dimethicone Copolymer (and) C12-13 Pareth-3 (and) C12-13 Pareth-23	DOWSIL™ HMW 2220 Non Ionic Emulsion	DOW®/UnivarUnivar	Skin Feel Enhancer	3.00

