



Sensory ✦ Performance ✦ Benefits



Illuminate

Highlighter Serum

Dreaming of a perfectly lit look that will last all day and night? This creamy serum will illuminate your face instantly for any desired day and night dewy highlights. It is both comfortable to wear and easy to apply.

Mackaderm® LIA

Universal natural emollient with excellent sensorial effects.

DOWSIL™ FA PEPS Silicone Acrylate

Low D4, D5, D6 long lasting film-former designed for color cosmetic applications. Provides excellent sebum and wear resistance. Formulated in a biobased carrier, allows cosmetic formulations to have a higher naturality content (ISO 16128 eligible content up to 60%).

DOWSIL™ EL-TIPS Silicone Elastomer Blend

Low D4, D5, D6 silicone elastomer with low odor and low color designed for skin care and color cosmetic applications. Delivers a powdery feel, blurring effect, slipperiness and smoothness. Formulated in a biobased carrier, allows cosmetic formulations to have a higher naturality content (ISO 16128 eligible content up to 70%).

DOWSIL™ ES-5373 Formulation Aid

Cold process Si+O/W emulsifier with very low odor. High oil phase load capacity. Ability to form low viscosity emulsions and to support various types of oils.

DOWSIL™ 3903 Liquid Satin Blend

Sensory enhancer with a unique rheology. Brings intense lubricity, luxurious satin-like feel and smoothness. Helps to maintain a good long lasting effect.

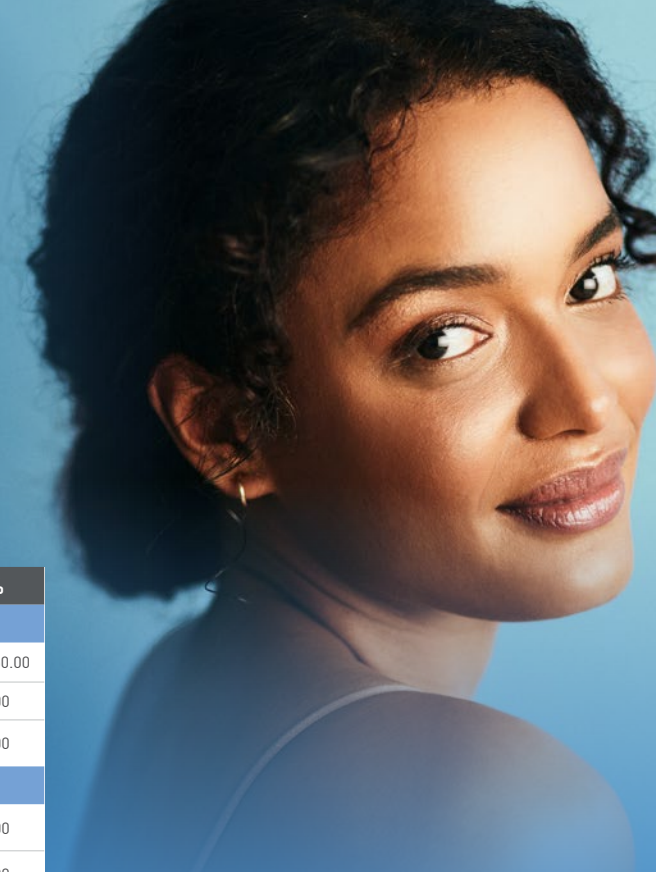
ACULYN™ SILTouch Rheology Modifier

Inverse emulsion of sodium acrylate/sodium acryloyldimethyl taurate copolymer in dimethicone 2 cSt. Cold process emulsifier and thickening agent. Low D4, D5 and D6 content. Versatility in a broad pH range.

Univar Solutions

The Essentials

TRADE NAME	INCI NAME	FUNCTION	SUPPLIER	%
PHASE A				
Deionized Water	Water	Solvent		Q.S.: 50.00
Glycerin USP	Glycerin	Humectant, vegetable origin	Univar Solutions	5.00
Phenostat	Caprylhydroxamic acid, Phenoxyethanol, Methylpropanediol	Preservative	Inolex / Univar Solutions	1.00
PHASE B				
DOWSIL™ FZ-3196 Fluid	Caprylyl Methicone	Emollient, sensory and spreadability enhancer	Dow / Univar Solutions	5.00
Mackaderm® LIA	Isoamyl Laurate	Emollient, sensory enhancer, naturally-derived	Solvay / Univar Solutions	3.00
Esterlac™ SLL	Sodium Lauroyl Lactylate	Emollient, co-emulsifier, naturally-derived	Corbion / Univar Solutions	0.50
DOWSIL™ FA PEPS Silicone Acrylate	Undecane, Tridecane, Acrylates/ Polytrimethylsiloxy methacrylate Copolymer	Film-former, long-lasting and water-resistance	Dow / Univar Solutions	6.00
DOWSIL™ EL-TIPS Silicone Elastomer Blend	C13-15 Alkane, Dimethicone/Vinyl Dimethicone Crosspolymer	Sensory enhancer	Dow / Univar Solutions	5.00
DOWSIL™ ES-5373 Formulation Aid	PEG-12 Dimethicone	Si+O/W emulsifier	Dow / Univar Solutions	5.50
PHASE C				
DOWSIL™ 3903 Liquid Satin Blend	Isododecane, Dimethicone/Vinyl Dimethicone Crosspolymer	Sensory enhancer	Dow / Univar Solutions	5.00
PHASE D				
ACULYN™ SILTouch Rheology Modifier	Sodium Acrylate/Sodium AcryloyldimethylTaurate Copolymer, Dimethicone, Trideceth-6, PEG/PPG-18/18 Dimethicone	Emulsifier, rheology modifier	Dow / Univar Solutions	8.00
PHASE E				
SunSHINE®	Synthetic Fluorphlogopite, Titanium Dioxide, Tin Oxide	Pearlescent pigment	Sun Chemical/ Univar Solutions	2.00
SunSHINE®	Synthetic Fluorphlogopite, Titanium Dioxide, Tin Oxide	Pearlescent pigment	Sun Chemical/ Univar Solutions	3.00
Fragrance	Fragrance	Fragrance	Various	1.00



FURTHER INFORMATION	
Procedure (cold process)	<ol style="list-style-type: none"> Combine ingredients of phase A In a separate vessel, combine ingredients of phase B under agitation (500rpm during 10 minutes) until homogeneous Add phase B to phase A under agitation (1,400rpm) until homogeneous Add little by little DOWSIL™ 3903 Liquid Satin Blend to phase AB under agitation 1,400rpm until perfectly homogeneous Homogenize using Silverson/Ultra-Turrax at 6,000rpm during 1 minute Add ACULYN™ SILTouch Rheology Modifier to phase ABC under mixing (500-700rpm), until a homogeneous thick white cream is obtained Add ingredients of phase E to the main vessel in the order listed. Ensure everything is homogeneous between each addition
Stability	Stable at least 2 months at 4°C, RT and 40°C (still ongoing).
Comments	<ul style="list-style-type: none"> pH = 5.02 Viscosity (spindle 6; 10 rpm; 1min) = 64,300 cPs (64.3%) Application: Apply with your fingers in the areas where you want to increase illumination on your face White pearlescent cream
Campaign	The Essentials
Issued by	Univar Solutions
Contact	personalcareNA@univarsolutions.com